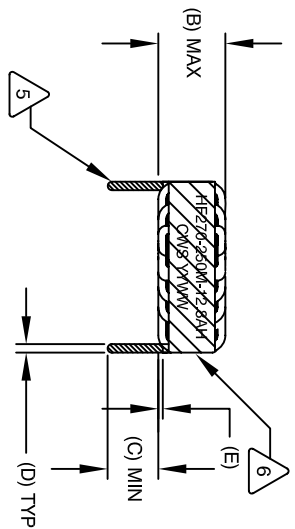


The information contained in this drawing is the sole property of CMS Coil Winding Specialist. Any reproduction in part or whole without written permission of CMS Coil Winding Specialist is prohibited.

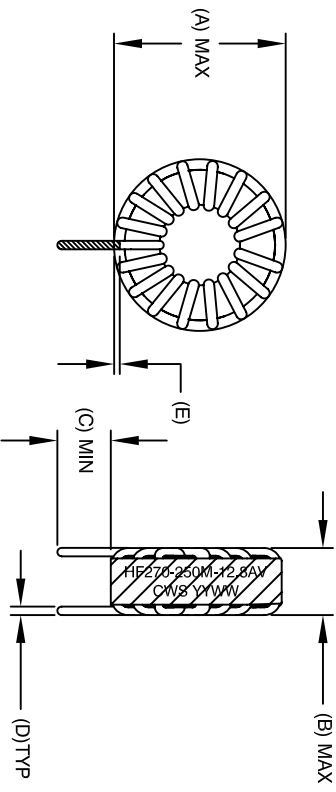
DIMENSIONAL TOLERANCE									
A (OD) MAX	B (HGT) MAX	C (LEAD) MIN	D (LEAD OD) TYP	E MIN/MAX	P1 REF	P2 REF			
1.350" [34.29]	.850" [16.51]	.500" [12.70]	.071" [1.80]	.040-.060" [1.00-1.50]	.600" [15.24]	1.200" [30.48]			

REVISION HISTORY				SIGN & DATE		
REV	ECN	DESCRIPTION	BY	DATE	CHK	DATE
A		INITIAL RELEASE	KJC	02/09/04	AK	02/09/04
B		UPDATED TOLERANCE & ROHS	KJC	10/1/10	AK	10/1/10



FRONT VIEW

HORIZONTAL



FRONT VIEW

SIDE VIEW

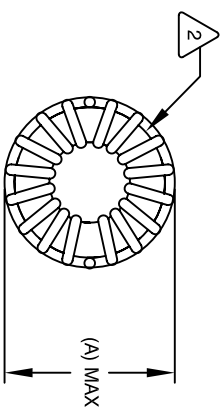
VERTICAL

- 8 BUILD TO ROHS COMPLIANCE
- 7 ** ADD SUFFIX "H" FOR HORIZONTAL & "V" FOR VERTICAL
- 6 USING A PERMANENT MARKING METHOD MARK PART NUMBER AND REVISION, IF APPLICABLE WRAP INDUCTOR WITH 3M # 69 OR EQUAL
- 5 TO THE CORE MUST REST FLAT ON PCB, LEADS MUST BE TANGENT FLUSH WITH THE COIL EDGE, AS SHOWN (I.E. COIL REMOVE INSULATION AND TIN LEADS 0.50 INCH
- 4 WIND COILS EVENLY SPACED AROUND THE CORE CONSTRUCTION:

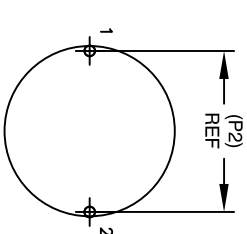
THESE SPECIFICATIONS ARE BASED ON LOW RIPPLE CURRENT WEIGHT: ~ 49 GRAM
 OPERATING TEMP: -55°C TO +180°C
 HI-POT TEST FOR WINDING TO CORE ISOLATION = 1250 VDC 5 SEC AT IDC OF 20 AMPS, LESS THAN 40 °C TEMP. RISE
 DCR = 7.0 MILLI-OHMS MAX.
 INDUCTANCE @ 12.8 AMP ~ 22 uH (LESS THAN 10% RIPPLE)
 INDUCTANCE @ 20.0 AMP ~ 20 uH (LESS THAN 10% RIPPLE)
 INDUCTANCE = 25 uH ±15% @ LOW DC BIAS, 100 KHZ, 250mV SPECIFICATIONS:

- 3 WIRE: UL RECOGNIZED 200°C RATED MAGNET WIRE CMS BYTE-MARK OR OTHER APPROVED PART CORE: POWDERED TOROIDAL CORE
- 2 RATING CLASS H (180 °C) REQUIRED
- 1 MATERIAL: UL RECOGNIZED 94V-0 FOR FLAMMABILITY

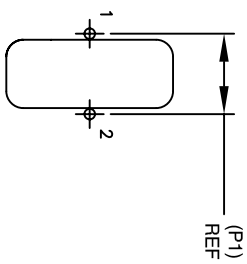
NOTES: UNLESS OTHERWISE STATED, READ NOTES FROM BOTTOM UP



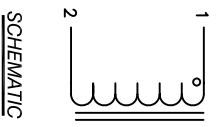
BOTTOM VIEW



MOUNTING HOLES PATTERN



MOUNTING HOLES PATTERN



SCHEMATIC

CODE IDENT	MFG. P/N	DESCRIPTION	ITEM NO.
AUTOCAD SOLIDWORKS SIGN	X	WWW.COILWS.COM, INC 353 W Grove Ave Orange, CA 92665	PARTS LIST
DRWN	DATE	DATE	
TDK	2/8/04	2/8/04	
DRXD	2/8/04	2/8/04	
ENGR.	KSUM	2/8/04	
APPR.	JLAV	2/8/04	
SIZE	TIME	NO.	
B	2=1	HF270-250M-12.8A_**	REV B
SCALE			
2=1			

TITLE: POWER INDUCTOR, HIGH TEMP
 25 uH, 12.8 Amp